

CRANETAINER SYSTEM

www.cranetainersystem.com

425-415-6767

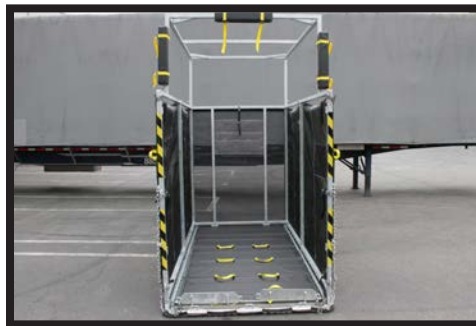
Service and Safety Bulletin Updated 01.01.2023



Cranetainer System US has a Sales and Service Center located at 943 S Nebraska St. in Seattle, WA. At this facility we offer product demonstrations, sales, service, repair, and storage for all Cranetainer System products, including our boom lift safety products. We can also perform load recertifications for our customers' Cranetainers, Material Handlers and Quick Hoists.



CRANETAINER



MATERIAL HANDLER



QUICK HOIST

All Cranetainer System accessories are designed to facilitate the proper and safe use of the equipment. Many of these accessories are listed in this bulletin. Be sure to understand their purpose and have the necessary accessories available at your job site to operate the equipment safely.

"A LEADER IN CONSTRUCTION MATERIAL HANDLING EQUIPMENT"



EQUIPMENT INSPECTION AND SERVICE

Outside of daily or weekly job site visual inspection, all Cranetainers, Material Handlers and Quick Hoists should be inspected at least once a year or at the end of each project (whichever comes first) by a qualified person. This service includes disassembly, cleaning and inspection of all components. A technician will inspect all metal and fabric components for any damage. All fabric sewing and welding repairs and metal welding repairs will be completed at this time.

EQUIPMENT TRANSPORT AND JOB SITE SERVICE

Cranetainer System can transport equipment from the completed job site for service and storage at our facility or it can be delivered to the next job site. We can also transport equipment directly from job site to job site for customers.

Cranetainer System also offers mobile job site service. Our service trucks carry replacement parts and accessories. Equipment accessories are also available to rent at any time if a job site needs additional equipment.



OFFSITE STORAGE

When not in use for extended periods of time, the equipment should be cleaned and stored under cover or indoors. Leaving this equipment unused and exposed to the elements can compromise the integrity of the fabric and metal components. For customers who need storage in between projects, our facility offers fenced, covered storage for Cranetainers, Material Handlers and Quick Hoists.



JOB SITE STORAGE

When not being operated, make sure Material Handlers, Cranetainers and Quick Hoists are placed in an area where trucks and other heavy equipment will not hit them. This has damaged some Cranetainer equipment, requiring costly repair work. If the job site is constrained, place tower cones, caution tape or another type of visible barrier around the perimeter of the equipment. Cranetainer equipment can also be stored in parking garages, on roofs or other upper areas when not in use.





CRANETAINER ACCESSORIES

All Cranetainers should have two Release/Tag Lines, Safety Pin, and Step Assist. Cranetainer System Release/Tag Lines are made 20' long for safe operation of the Cranetainer. Step Assists help workers enter and exit the Cranetainer. **Safety Pins always have to be used when operating a Cranetainer.**

DO NOT OPERATE A CRANETAINER WITHOUT A SAFETY PIN. If the Safety Pin becomes lost or damaged, discontinue use of the Cranetainer immediately and contact Cranetainer System for a replacement.



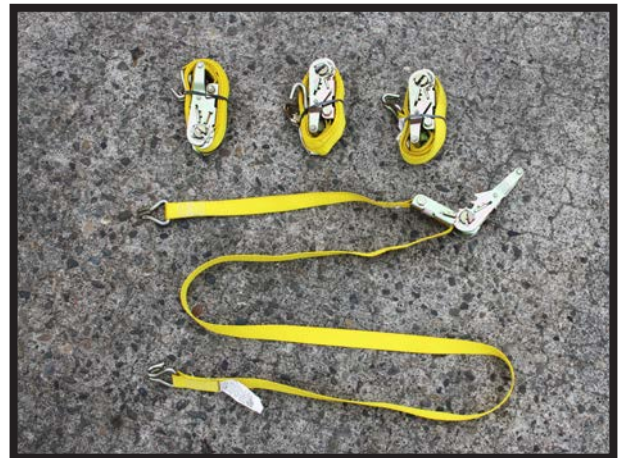
Do not use Cranetainers as a wash out area for slurry from pump equipment. This action pushes the silt material in between the layers of the Cranetainer Fabric. If this happens, the Cranetainer has to be cut open to remove the material. This increases cleaning and repair costs.

MATERIAL HANDLER ACCESSORIES

The Forklift Rack and Accessories allow the Material Handler to be operated with a 10,000 lb. high reach forklift. The four Stabilizing Straps stabilize the Material Handler on the Forklift Rack. The two-inch Forklift Ratchet Strap secures the Forklift Rack to the forklift cage.



The Stabilizing Straps are there only for the purpose of stabilizing the Material Handler when driven over rough terrain or curbs. DO NOT LIFT THE MATERIAL HANDLER FROM THE FOUR-WAYS (WITH A CRANE OR FORKLIFT) WITH THE FORKLIFT RACK ATTACHED TO THE MATERIAL HANDLER.



The Forklift Rack and the Material Handler are two separate components. The Forklift Rack is only to be used when operating the Material Handler with a forklift, not a crane.





The Forklift Ratchet Strap is comprised of two components; a ratchet end and a tail end. The tail end has three black Fabric Guards that need to be slid into place on the sharp edges of the forklift cage.

These Fabric Guards protect the strap from being cut or damaged when under tension. If these black Fabric Guards are missing, contact us for replacement. The Forklift Ratchet Strap is a required component.



All components and accessories are necessary for the proper operation of the equipment. This Material Handler was operated without a Forklift Ratchet Strap. Due to operator error, it was dropped from 20 feet in the air and landed on the concrete causing severe damage to the Material Handler.



GUARDRAIL BRACKETS

The Cranetainer System Guardrail Brackets are designed to make a removable guardrail system for use with the Material Handler.



The Material Handler Guardrail Chains attach to the pre-installed Guardrail Brackets. This system provides a 200 lb. guardrail system and allows workers to offload the Material Handler without tying off.



RETRIEVAL POLE

When using a crane, the Material Handler will often approach the building facing the wrong direction. To prevent workers from having to reach out and extend beyond the edge of the building, the Retrieval Pole joins together to make a ten-foot tool which allows workers to turn the Material Handler the right direction. It can also be used to retrieve small items from inside the Material Handler.





TOP SECTIONS

Material Handler Top Sections come in different heights and designs. Top Sections for crane operation have corner gussets and cross section support for strength.

Top Section Support Brackets are used to reduce Material Handler height **when operating with a forklift in low clearance areas**, such as parking garages, or where height is restricted due to overhangs. **DO NOT USE SUPPORT BRACKETS WHEN LIFTING THE MATERIAL HANDLER WITH A CRANE.** If the job site needs a component it does not own, **all accessories and components** are available for rent.



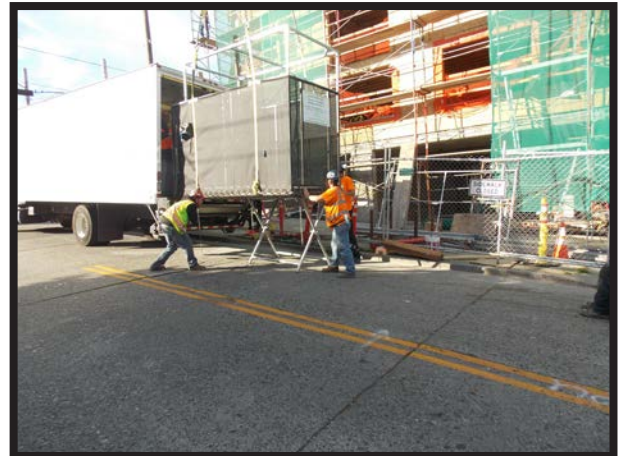
DO NOT OPERATE THE MATERIAL HANDLER WITHOUT ONE OF THESE ACCESSORIES ATTACHED AS A TOP SECTION.



BASE STABILIZERS

The Base Stabilizer is a load rated, adjustable rack that allows workers to load the Material Handler directly off the back of a truck, when suspended by a crane. This prevents having to lower the material to the ground prior to loading the Material Handler.

Workers cannot enter the Material Handler when only the front of the Material Handler is supported by the truck. Both the front and the back have to be fully supported with **no tension on the four-way**. This does not apply when using a forklift.



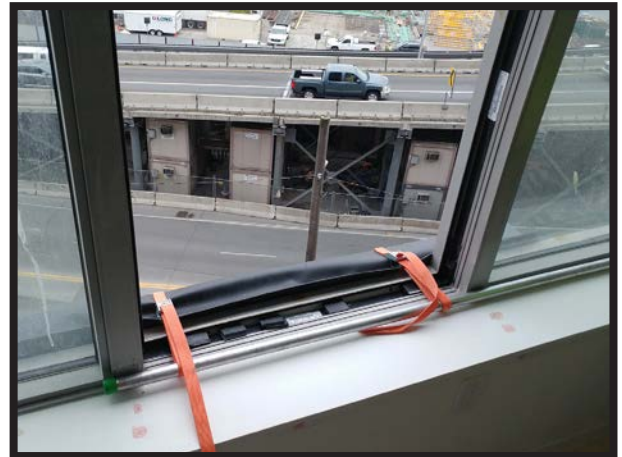
Using the Base Stabilizer will prevent workers from operating under non-compliant and hazardous situations.

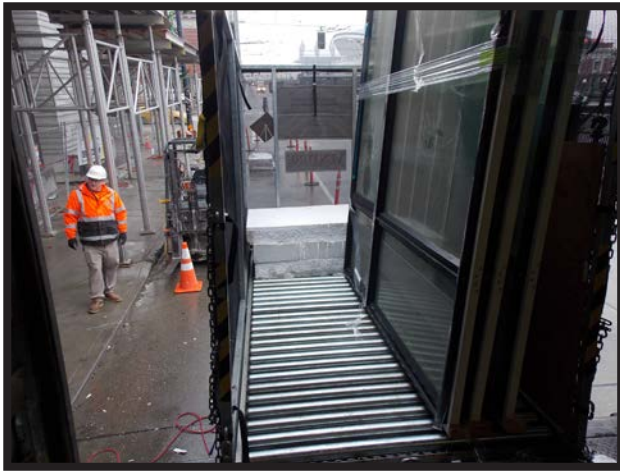


BUMPERS/SILL BUMPERS

Bumpers attach vertically or horizontally to the front of the Material Handler to help protect glass, finished metal, railings, and other delicate surfaces from scratches and damage.

Sill bumpers are free floating and can be hung from a window or doorsill for protection as well.





DUNNAGE/BLOCKING

When a Roller Pad or Roller Skid is not being used, dunnage or blocking is important when moving large objects such as; windows, shower/tub kits, or doors.

Dunnage keeps these objects from rolling to the back of the Material Handler putting workers at the offload area at a disadvantage because they may feel the need to step onto or into the Material Handler to reach or gain leverage on the object.

Workers are not allowed to step into or onto the Material Handler when it is lifted overhead.



PLYWOOD SIDES

Installing two horizontal sheets of plywood along one or both sides of the inside of the Material Handler allows windows, doors and other materials to lean against the plywood wall. As workers pull these materials forward, they slide along the solid wall and don't get caught up in the fabric or framework of the Material Handler. The Plywood can be installed by drilling holes and zip tying or wiring it to the metal framework of the Material Handler. **This technique will make the loading and offloading process more efficient and safer.**

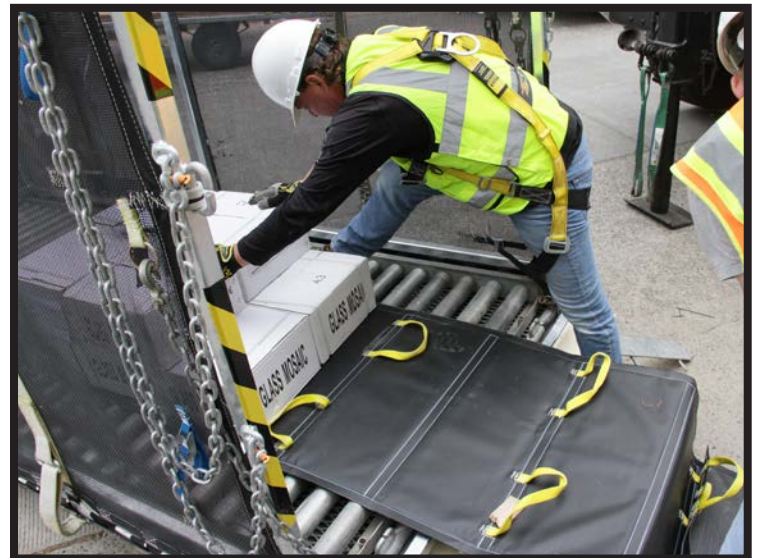


ROLLER SKIDS

Depending on the size of the opening at the offload point, plywood skids can also be used as a solid flooring with or without the Roller Pad to stabilize objects such as appliances and also aid in the offload procedure. Plywood can also be used as a floor to give workers a solid footing to walk on when loading. Be sure the offload opening is large enough to pull the plywood floor through.

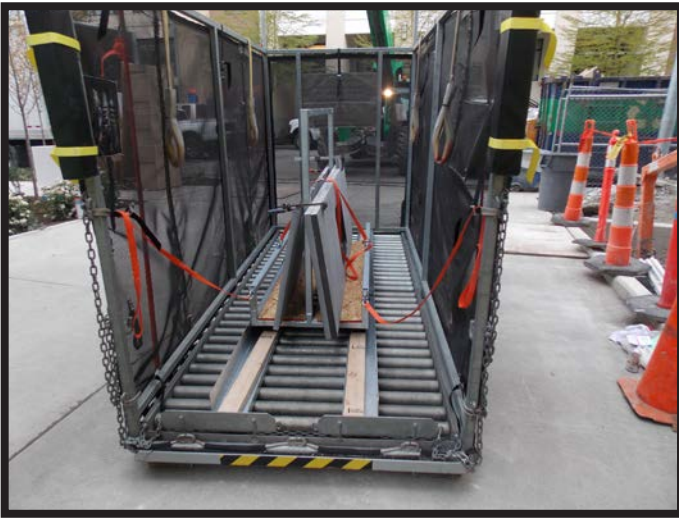


When working through narrower openings, there are Narrow Roller Skids and Narrow Roller Pads available for easy offloading.



RACK AND TRACK SYSTEM

The Rack and Track System allows workers to move objects with wheels, like buggy carts, job boxes, equipment, and other racks designed to carry materials. The track sections adjust to wide or narrow wheel sets. Using a wheeled offload device when moving heavy or delicate materials can help prevent damage to materials and injury to workers.



Cranetainer System has developed different processes to move granite and quartz countertops into the structure. These include the Rack and Track System, Slatted Roller Pad, and Roller Skid. Using the Rack and Track System is a safe and efficient way to move these materials.

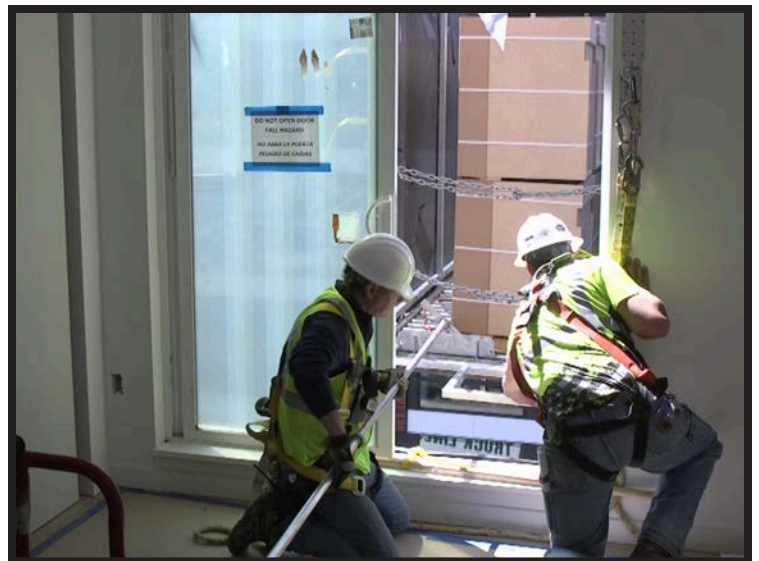
SILL STOP

Using the Material Handler with a crane when it cannot reach the sill could cause a serious accident when offloading heavy objects. This can occur when the opening is narrow, limited in height, or unreachable because of roof, deck, and other structural overhangs.



The Sill Stop is a removeable device that attaches to the front of the Material Handler and is used to safely offload material when these situations occur.

The Sill Stop extends out to reach the sill, which allows workers to safely offload materials when the front of the Material Handler cannot reach into a structure's opening.



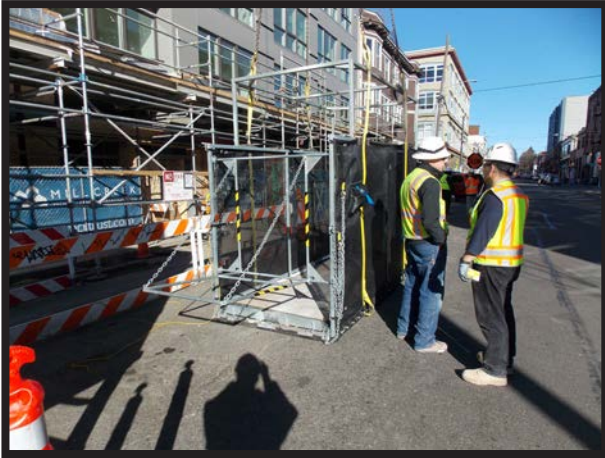
RAIN GUARDS

In some areas and climates where rain is prevalent, if the Material Handler is not used on a regular basis, the bearings in the roller tables can rust and seize up. If this happens, the rollers can become difficult to use or become damaged beyond use.



Rain Guards rest on the outer rails of the Roller Tables and push water away from the bearings. Once installed the Rain Guards will protect the bearings. The Roller Pad can be placed on top of them to protect the entire Roller System from unnecessary moisture damage. If the Material Handler cannot be covered or stored under cover then the Rain Guards should be used for rust prevention.

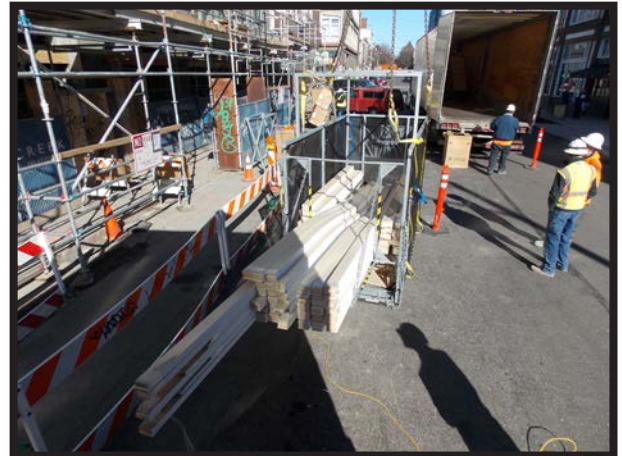




VERTICAL STABILIZER AND EXTENSION

Material Handlers can also safely move a multitude of long objects including plumbing pipe, sprinkler system pipe, and baseboard/door trim.

The Vertical Stabilizer and Stabilizer Extension are able to move items up to 20' long. For objects 14' and under, the Vertical Stabilizer is used and for objects between 14' and 20' the Stabilizer Extension is added.



DO's AND DON'Ts

- Do not use Material Handlers or Quick Hoists for trash removal.
 - Do not use the Material Handlers as a tip mechanism to empty the contents. This can seriously injure workers and cause property damage.
 - Do not paint the fabric material or any other components of the Material Handlers, Cranetainers or Quick Hoists.
 - Do not use permanent marker to write on any part of the equipment, with the exception of the signage, to make the safety information and serial number legible in the event of fading or damage to the lettering.
 - Do not allow workers to ride in or on Cranetainers, Material Handlers or Quick Hoists.
 - View all Cranetainer System Product Videos and Safety and Operations Videos for proper safety and operating procedures. Contact Cranetainer System US by phone or email for additional information.
-